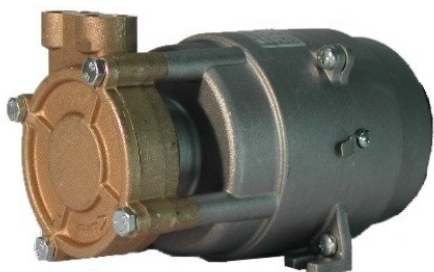




PS 45

kW 0.30 Hm 33.0 max
Hp 0.40 L/1' 32.5 max

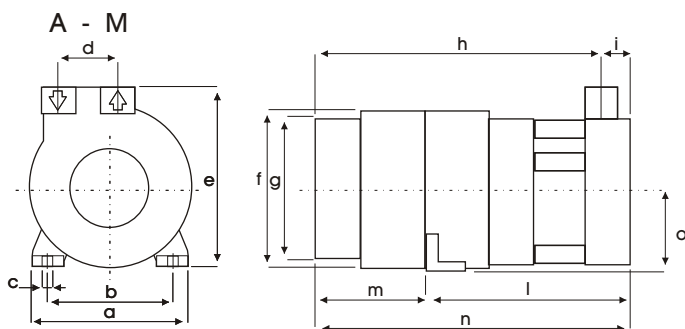


Corpo pompa **OTTONE OT 58**
Pump Body **BRASS 58**
Pumpengehäuse **MESSING MS 58**

Girante aperta **OTTONE OT 58**
Open Impeller **BRASS 58**
Offenes Laufrad **MESSING MS 58**

Albero motore **AISI 430 F**
Motor Shaft
Motorwelle

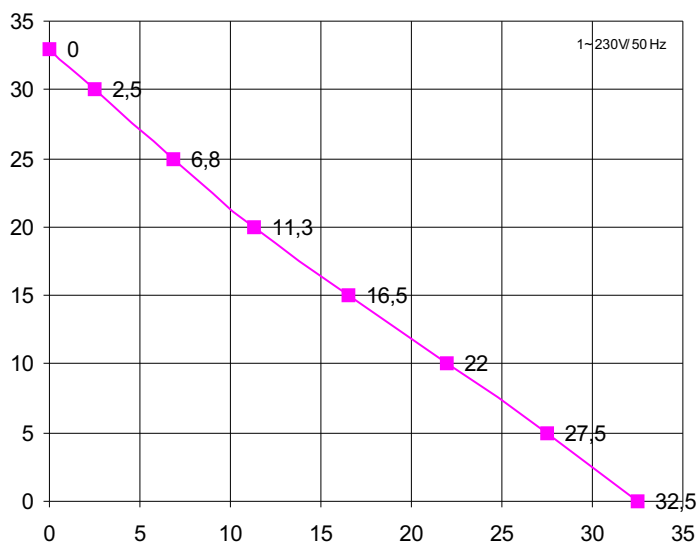
Tenuta meccanica **GRAFITE/CERAMICA**
Mechanical Seal **CARBON/CERAMIC**
Gleitringdichtung **KOHLE/KERAMIK**



DX	A	M
	F	F
	F 3/8"	F 3/8"

mod	a	b	c	d	e	f	g	h	i	l	m	n	o	p	q	r	kg
PS 45	96	75	6,5	25	102	96	87	147	15	107	55	162	50	-	-	-	4,0

REVISIONE N.02/11/02 P62/02



H m	0	5	10	15	20	25	30	33
L / 1'	32,5	27,5	22,0	16,5	11,3	6,8	2,5	0

Ci riserviamo il diritto di apportare modi fiche tecniche.
We reserve the right of technical modifications.
Technische Änderungen vorbehalten.

Potenza motore **Hp 0,4 kW 0,3**
Motor power
Motor Leistung

Tensione/Frequenza **1~V/Hz**
Tension/Frequency
Spannung/Frequenz **230/50**

Corrente assorbita **A**
Power consumption
Stromaufnahme **1,73**

GPM **2800**
RPM
UPM

Condensatore **8 µF**
Capacitor
Kondensator

Protezione termica **155 °C**
Thermal Overload
Überlastschutz

Classe isolamento **F**
Insulation class
Isolationsklasse

Grado protezione **IP 44**
Protection class
Schutzklasse

Servizio **S5** **INTERMITTENTE**
Duty **INTERMITTANT**
Betriebsart **KURZZEITIG**